

9-652-1051

97-04 Jeep Wrangler DW65c Fuel Pump Installation Guide



Parts List:

- DW65c, 9-652
- Grommet
- Fuel Sock (x2)

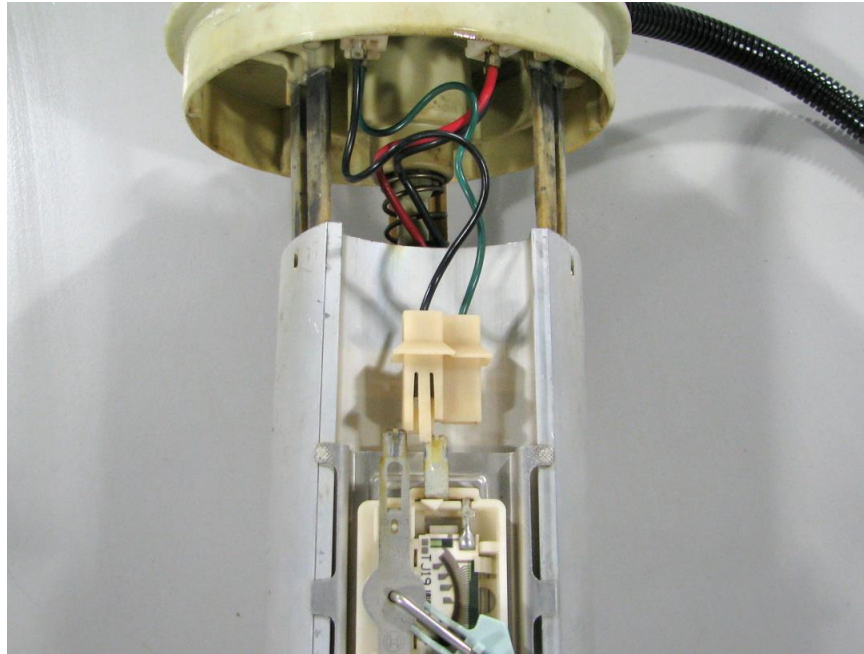
Wrangler DW65c Fuel Pump Install

PLEASE READ – this guide is intended to aid in the installation of our products. It is recommended that factory manuals or instructions are followed to remove the fuel pump assembly from the vehicle. Some instructions in this guide are generic. The factory manual should supersede any contradiction.

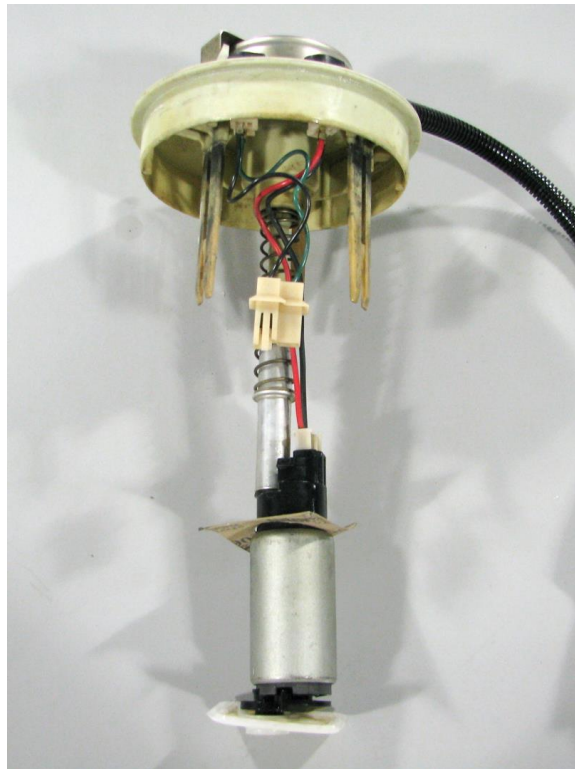
Below is a picture of suggested tools that will make the installation process easier.



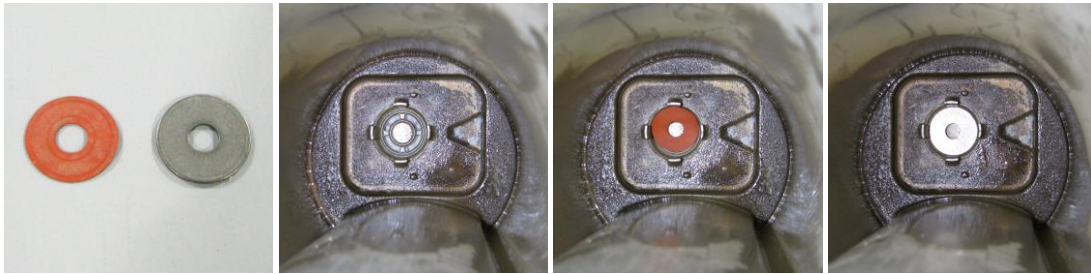
1 – disconnect the fuel level sender connector



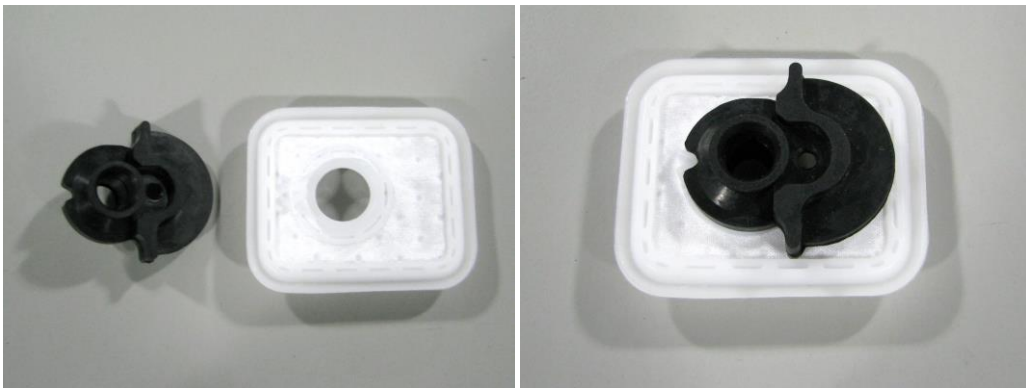
2 – separate the pump assembly from the bucket by depressing the 3 vertical supports while pulling the assembly hat away from the bucket



3 – during separation, the one-way valve may dislodge. The reassembly order is the orange (rubber) seal goes in the hole first with the washer on top



4 – assembly the pump pre-filter kit (fuel sock and grommet) and install onto the DW65c pump



5 – install the DW65c onto the pump assembly, the pump should be oriented as pictured below



6 – install the assembly into the bucket, make sure to align the pump so it seals into the feed port in the bottom of the bucket (where the one-way valve is installed) and install the assembly pre-filter onto the bottom the bucket



7 – reinstall the assembly into the fuel tank and attach a length of hose to the outlet of the pump assembly allowing it to drain into a fuel safe container and prime the fuel pump assembly

8 – crank the engine for a period of time long enough to prime the pump assembly and evacuate the air introduced during the pump installation process

9 – attach supply line to the outlet of the pump assembly